

PRESENTATION FOLDERS

PRODUCT CODE: P_FOLDERS



First impressions can make or break a business opportunity. Presentation folders are one of the most effective printed items you can leave behind with a client - tactile, and highly functional, there is no better way to deliver key sales & informational documents.

We can create custom presentation folders to suit any budget and requirement, using digital or offset printing processes. Low cost options include single sided printed folders on economical stock, to specifically designed full colour, varnished folders to take lengthy proposals or sales documents.

+ PRESENTATION FOLDER DETAILS

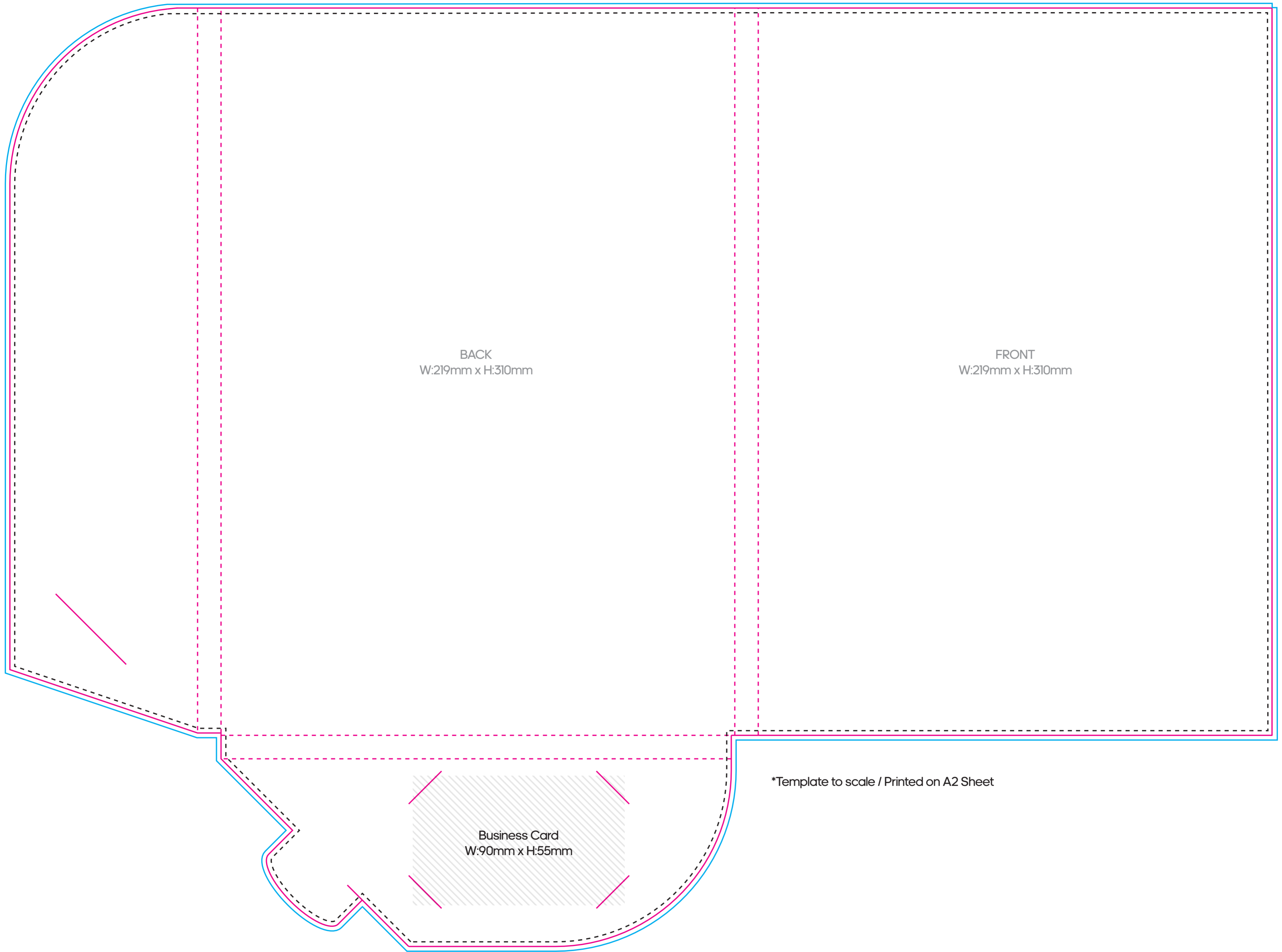
- 527 x 421 cm size when opened
- 350 gsm, gloss laminate
- Document pockets
- Business card slot on right pocket
- Delivered pre-folded, assembled and glued

+ PREMIUM FINISHING OPTIONS

- Spot gloss varnish
- Metallic foiling
- Matte or gloss laminate for one or both sides
- White ink printing
- Die cut corners

PRESENTATION FOLDERS

PRODUCT CODE: P_FOLDERS



CRESULTS
PRINT & DISPLAY

6 - 10MM GUSSET | CLIP IN & SUPPLIED FLAT

ARTWORK NOTES

Artwork setup CMYK as the printing is full colour process.
Colour printed with ink on different media look different to the colours displayed on your computer screen. Please embed all images and make sure they are clear enough at printing size.

If you require a Pantone Match, then please provide relevant PMS details and we will endeavour to match as close as possible. A perfect match can not be guaranteed.

CMYK
 Pantone Match Please Specify:

This proof is for your careful approval prior to production. Please check thoroughly as the responsibility for its accuracy rests with you... Our valued client.

BLEED
This is the excess material that gets printed to allow for an edgeless print, with no colourless edges.

FINISHED SIZE
This is the size of the finished flag excluding the flag sleeve all stitches will go across.

SAFE AREA
In order to avoid vital artwork from being cut-off during sewing please keep all text and logos inside the dotted line.

UNPRINTED
This is the excess of the material that will not be visible. This remainder of the material will be hidden in the base.