

BLADE FLAG

PRODUCT CODE: B_FLAG



Completely portable, blade flags are perfect for events where brand visibility in crowded areas is required.

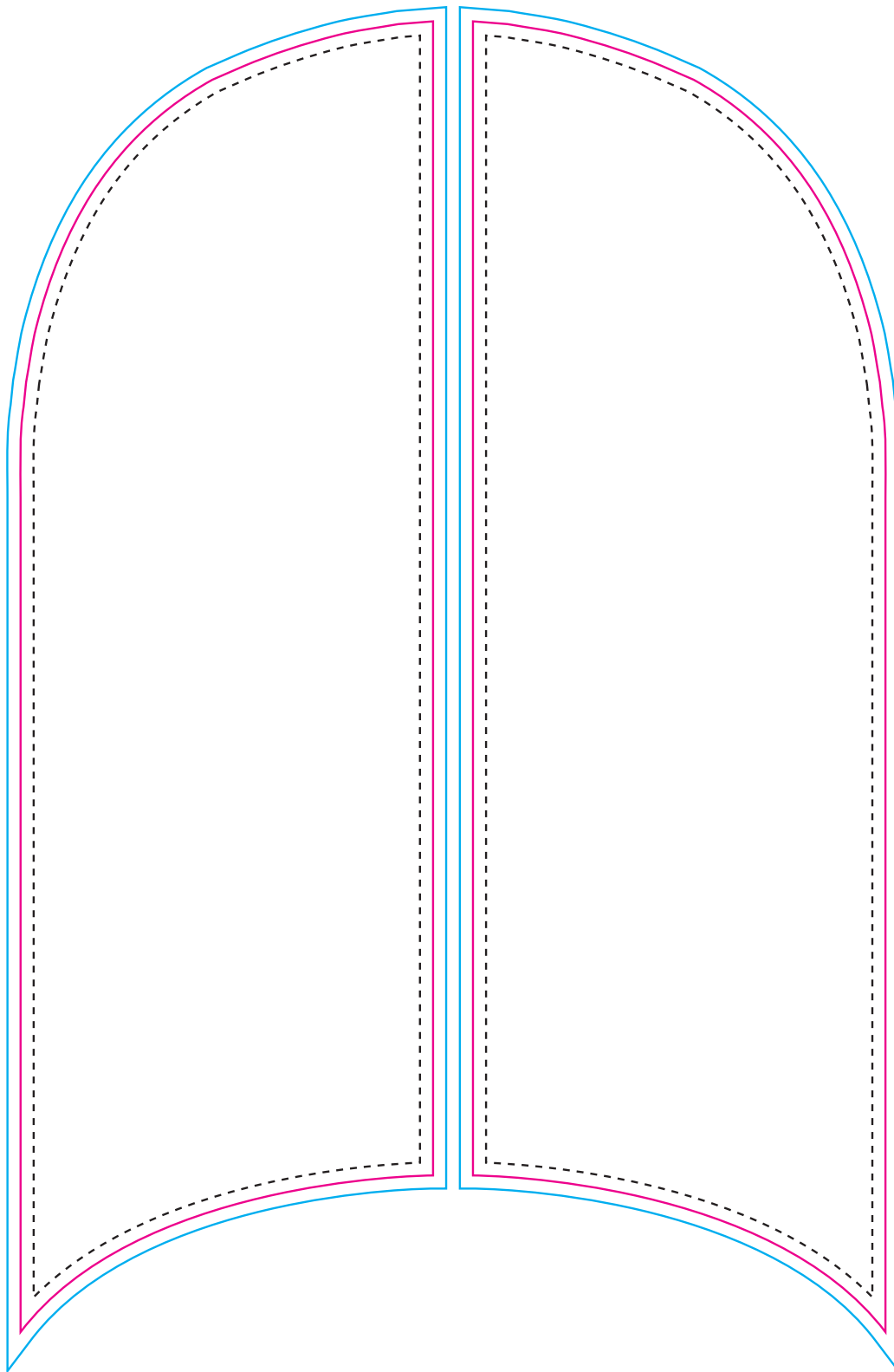
Our Blade Flags are easy to assemble and have a simple tensioning system to ensure they look perfect every time. We have a range of bases available to suit any location or environmental requirement. We can supply flags as single sided, or with a block out to ensure the design can be read correctly from either side.

+ AVAILABLE BLADE FLAG SIZES

- Small (mm): 2000 x 630
- Medium (mm): 3000 x 700
- Large (mm): 4100 x 800
- Size of carry bag (mm): 1530 x 195 x 30

BLADE FLAG

PRODUCT CODE: B_FLAG




*Template scaled at 10%

ARTWORK NOTES


Artwork setup CMYK as the printing is full colour process.
Colour printed with ink on different media look different to the colours displayed on your computer screen. Please embed all images and make sure they are clear enough at printing size.


If you require a Pantone Match, then please provide relevant PMS details and we will endeavour to match as close as possible. A perfect match can not be guaranteed.

CMYK
 Pantone Match Please Specify:

 **BLEED**
This is the excess material that gets printed to allow for an edgeless print, with no colourless edges.

 **FINISHED SIZE**
This is the size of the finished flag excluding the flag sleeve all stitches will go across.

 **SAFE AREA**
In order to avoid vital artwork from being cut-off during sewing please keep all text and logos inside the dotted line.

 **UNPRINTED**
This is the excess of the material that will not be visible. This remainder of the material will be hidden in the base